

CANDIDATE
NAME

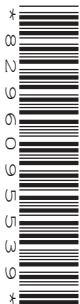
--

CENTRE
NUMBER

--	--	--	--	--

CANDIDATE
NUMBER

--	--	--	--



COMBINED SCIENCE

5129/21

Paper 2

October/November 2014

2 hours 15 minutes

Candidates answer on the Question Paper.

No Additional Materials are required.

READ THESE INSTRUCTIONS FIRST

Write your Centre number, candidate number and name on all the work you hand in.

Write in dark blue or black pen.

You may use an HB pencil for any diagrams, graphs or rough working.

Do not use staples, paper clips, glue or correction fluid.

DO NOT WRITE IN ANY BARCODES.

Answer **all** questions.

A copy of the Periodic Table is printed on page 24.

Electronic calculators may be used.

You may lose marks if you do not show your working or if you do not use appropriate units.

At the end of the examination, fasten all your work securely together.

The number of marks is given in brackets [] at the end of each question or part question.

This document consists of **21** printed pages and **3** blank pages.

1 Use words from the list to complete the sentences.

acid alkali duodenum
excretion oesophagus pancreatic peristalsis
protein salivary starch

Each word may be used once, more than once or not at all.

The gland produces the enzyme amylase in the mouth.

In the mouth, amylase acts on and breaks it down into sugars.

Chewed food is swallowed and passes down the into the stomach.

Bacteria in the food are killed by in the stomach secretions.

Material is passed along the alimentary canal by the process of

[5]

- 2 A mixture of chromium(III) oxide and aluminium is ignited with a magnesium fuse, as shown in Fig. 2.1.

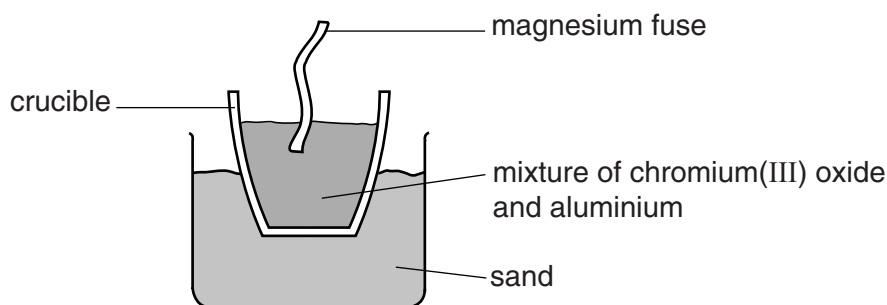


Fig. 2.1

A violent reaction occurs.

The equation for the reaction is



- (a) (i) Calculate the relative molecular mass of aluminium oxide.

(A_r : Cr, 52; Al, 27; O, 16)

relative molecular mass =[1]

- (ii) The relative molecular mass of chromium(III) oxide is 152.

Use the equation to complete the following sentences.

152 g of chromium(III) oxide produces g of chromium.

38 g of chromium(III) oxide produces g of chromium. [2]

- (b) State the type of reaction that aluminium has undergone.

.....[1]

- (c) Aluminium is more reactive than iron.

Suggest why aluminium is resistant to corrosion but iron corrodes easily.

.....
[2]

- 3 A series circuit containing two resistors **P** and **Q** is shown in Fig. 3.1.

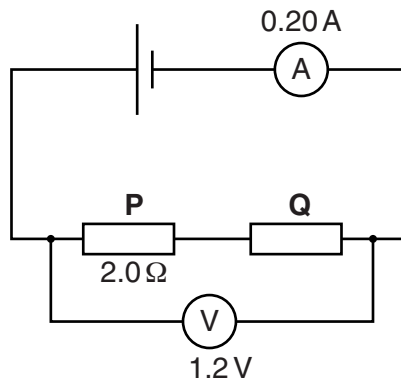


Fig. 3.1

Resistor **P** has a resistance of $2.0\ \Omega$.

The voltmeter reads 1.2V . The ammeter reads 0.20A .

- (a) Calculate

- (i) the combined resistance of resistors **P** and **Q**,

resistance = Ω [2]

- (ii) the resistance of resistor **Q**.

resistance = Ω [1]

- (b) Calculate the time taken for a charge of 10C to pass through the ammeter.

time = s [2]

- (c) The resistors in Fig. 3.1 have fixed values.

In the space below, draw the symbol for a variable resistor.

[1]

4 (a) Fig. 4.1 shows five methods of birth control and examples of each method.

Complete Fig. 4.1 by drawing a line between the method of birth control and its example.

One line has been drawn for you.

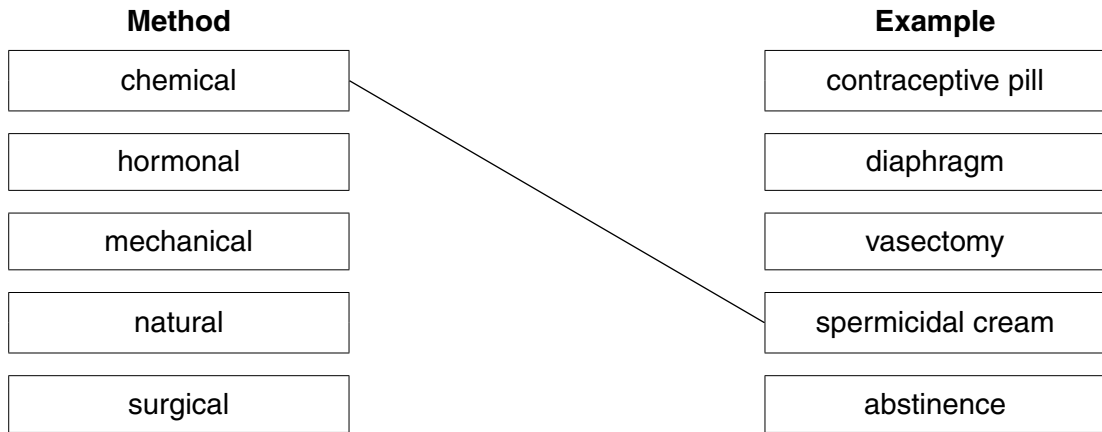


Fig. 4.1

[4]

(b) State the name of an example of birth control other than abstinence that helps prevent the spread of HIV.

Explain why it is effective.

name

explanation

.....

.....

..... [3]

5 Fig. 5.1 shows the arrangement of the electrons in atoms of five different elements **A–E**.

The letters are **not** the chemical symbols of the elements.

element	A	B	C	D	E
electron structure	2,4	2,8,8	2,8,6	2,8,4	2,8,2

Fig. 5.1

Use the letters in Fig. 5.1 to answer the questions.

Each letter may be used once, more than once or not at all.

- (a) Which element has proton number 12? [1]
- (b) Which element has nucleon number 32 and an isotope that
contains 16 neutrons? [1]
- (c) Which two elements are in the same group of the Periodic Table?
..... and [1]
- (d) Which element forms a basic oxide? [1]

6 A moon buggy is a type of car used on the Moon.

The buggy has a mass of 200 kg.

On the Moon, the gravitational field strength is 1.6 N/kg.

(a) Calculate the weight of the buggy when it is on the Moon. State the unit.

weight = unit [2]

(b) State whether the mass of the buggy on Earth is greater than, equal to or less than its mass when on the Moon.

..... [1]

(c) The buggy is driven on the Moon.

Calculate the acceleration when the accelerating force is 550 N.

acceleration = unit [3]

7 A measuring cylinder containing a liquid is shown in Fig. 7.1.

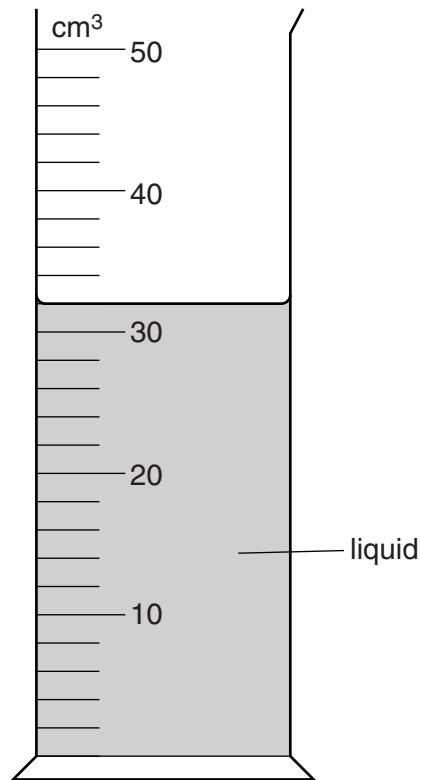


Fig. 7.1

(a) (i) State the volume of the liquid in the cylinder.

volume = cm³ [1]

(ii) The mass of the liquid is 35.2 g.

Calculate the density of the liquid.

density = unit [3]

(b) A stone is placed in the liquid as shown in Fig. 7.2.

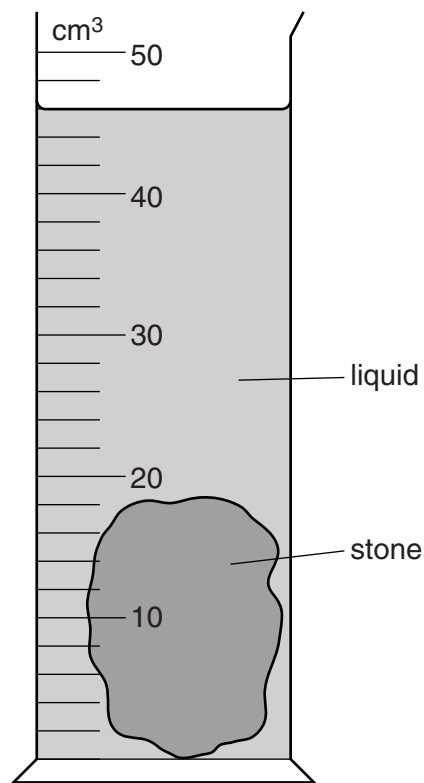


Fig. 7.2

Calculate the volume of the stone.

volume = cm^3 [1]

8 (a) State the function of the heart.

.....
.....[1]

(b) Fig. 8.1 shows a section through the heart as viewed from the front.

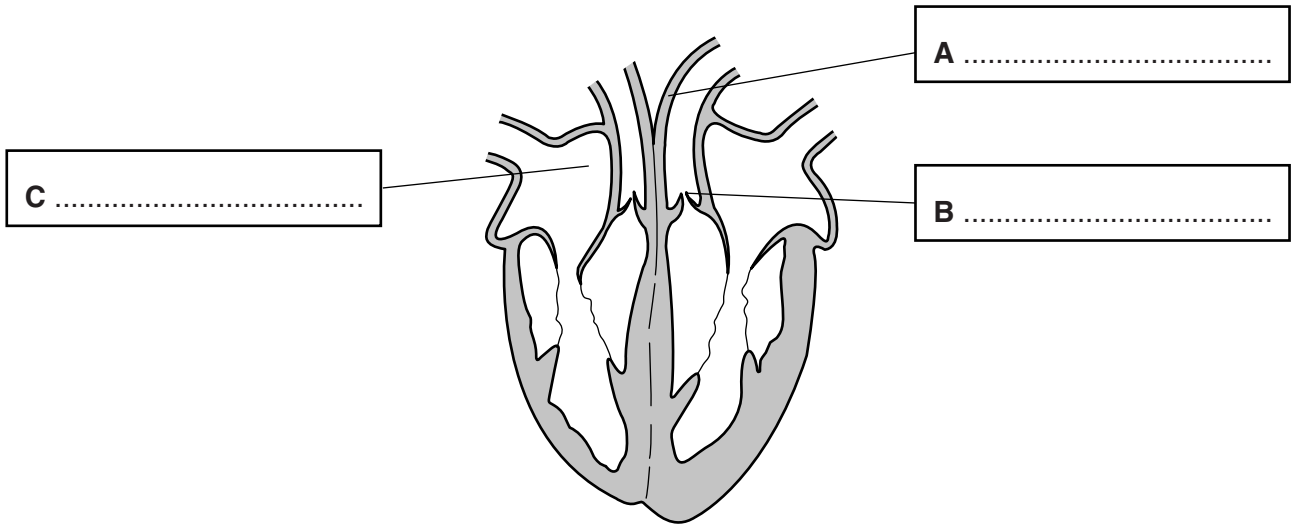


Fig. 8.1

On Fig. 8.1, complete the labels **A**, **B** and **C**.

[3]

(c) Fig. 8.2 shows a surface view of the heart of someone who has coronary heart disease.

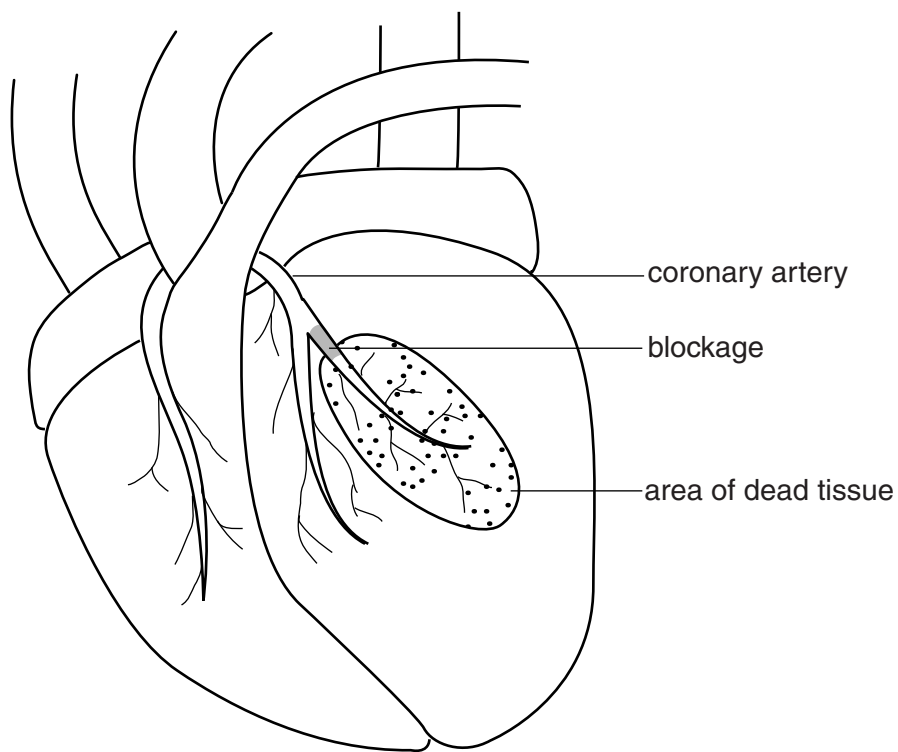


Fig. 8.2

The blockage in the coronary artery has prevented blood reaching some of the heart tissue. This tissue has died.

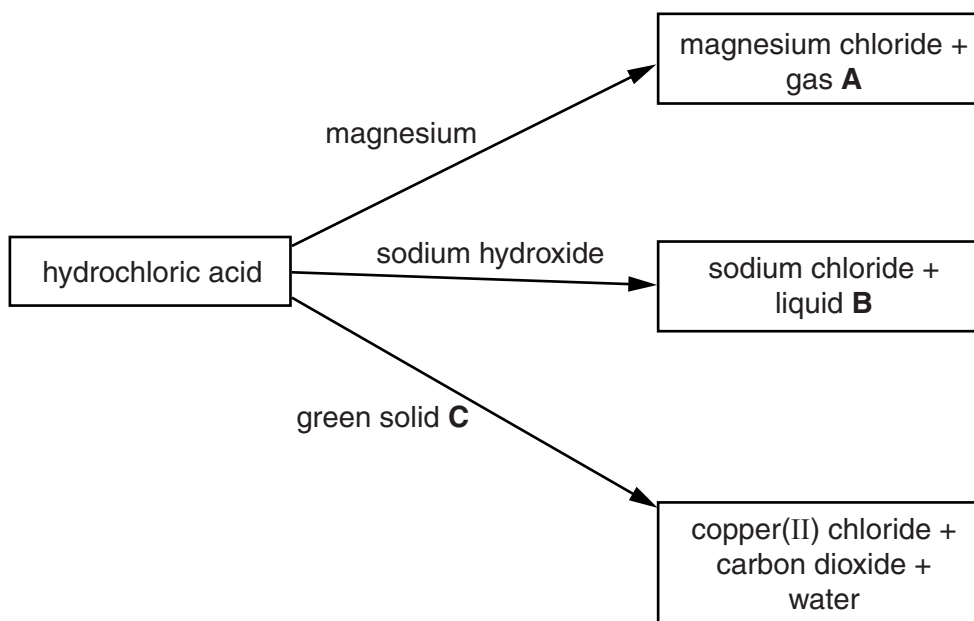
(i) Explain why lack of blood causes heart tissue to die.

.....
.....
.....[2]

(ii) State three possible causes of coronary heart disease.

1
2
3
[3]

9 Study the following reaction scheme.



(a) Identify **A**, **B** and **C**.

gas **A**

liquid **B**

green solid **C**

[3]

(b) (i) State the colour of Universal Indicator after it is added to hydrochloric acid.

.....

[1]

(ii) State the name of the ion which causes acidity.[1]

(c) State the test to show that carbon dioxide is produced when green solid **C** is added to hydrochloric acid.

test

.....

result

[2]

- 10 A student uses the apparatus shown in Fig. 10.1 to measure the force exerted on an iron cube by a magnet. The diagram is not to scale.

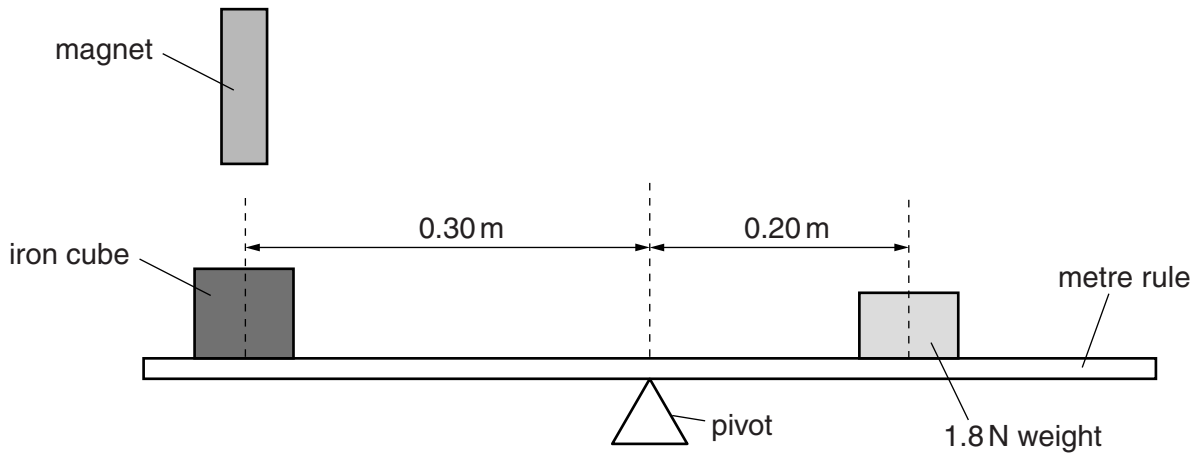


Fig. 10.1

The pivot is at the centre of a uniform metre rule.

The iron cube is placed 0.30 m from the pivot with a magnet held a fixed distance above the cube.

The metre rule is balanced when a weight of 1.8 N is placed 0.20 m from the pivot.

- (a) (i) Calculate the clockwise moment produced by the 1.8 N weight.

moment = N m [2]

- (ii) The force exerted by the magnet on the iron cube produces a clockwise moment about the pivot of 0.24 N m.

Calculate the force exerted by the magnet on the iron cube.

force = N [1]

- (iii) Calculate the anti-clockwise moment produced by the weight of the iron cube.

moment = N m [1]

- (b) The iron cube is replaced by a lead cube.

Explain why the lead cube and iron cube must have different weights if the metre rule is to remain balanced.

.....
 [1]

11 Fig. 11.1 shows a section through a leaf when viewed under a microscope.

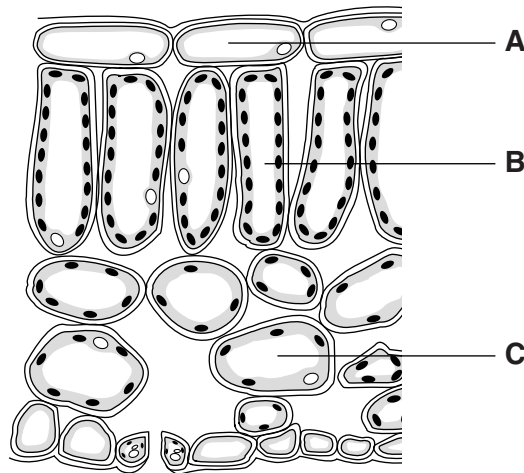


Fig. 11.1

(a) Name the types of cell labelled **A**, **B** and **C**.

- A
 - B
 - C
- [3]

(b) (i) The main function of a leaf is to carry out photosynthesis.

State the word equation for photosynthesis.

.....[2]

(ii) Explain the function of chlorophyll during photosynthesis.

.....

.....

.....

.....[2]

12 Fig. 12.1 shows the fractional distillation of petroleum.

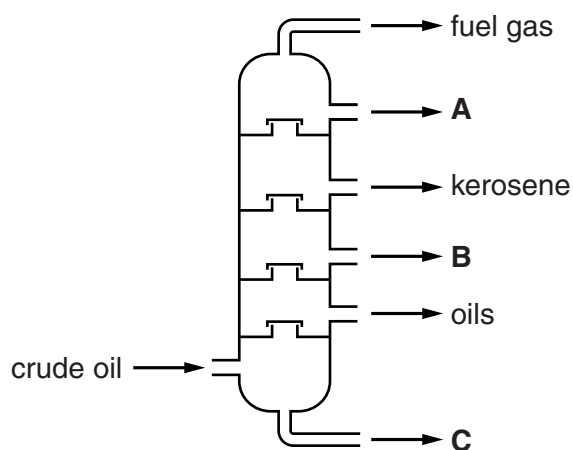


Fig. 12.1

(a) Identify fractions **A**, **B** and **C**.

A

B

C

[3]

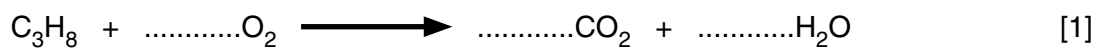
(b) The fractions obtained by fractional distillation contain hydrocarbons from the homologous series known as the alkanes.

State the general characteristics of a homologous series.

.....

 [2]

(c) (i) Balance the equation for the combustion of propane.



(ii) State the condition in which propane burns to produce carbon monoxide rather than carbon dioxide.

..... [1]

13 A liquid-in-glass thermometer is shown in Fig. 13.1.

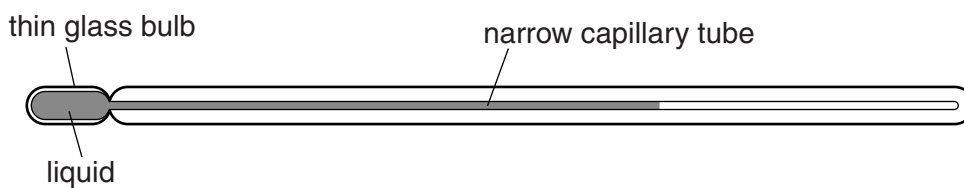


Fig. 13.1

(a) The thermometer is at room temperature and is then placed in hot water.

State the change that occurs, if any, to

(i) the volume of the liquid in the thermometer,

.....[1]

(ii) the mass of the liquid in the thermometer.

.....[1]

(b) The thermometer in Fig. 13.1 has no scale marked on it.

To mark two fixed points on the thermometer, it is placed in melting ice and then in boiling water.

State the temperatures of the two fixed points.

.....°C and°C [1]

(c) Clinical thermometers contain a constriction, as shown in Fig. 13.2.

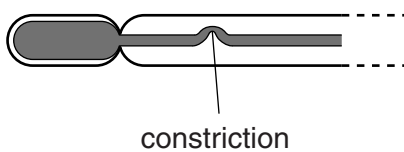


Fig. 13.2

Explain the purpose of the constriction.

.....
[1]

14 (a) Describe how a covalent bond is formed between two atoms.

.....
.....[1]

(b) State **two** ways in which the physical properties of covalent compounds differ from the physical properties of ionic compounds.

1.
.....
2.
..... [2]

(c) State one chemical difference between the oxides of metals and non-metals.

.....
.....[1]

15 Fig. 15.1 shows part of a food chain.

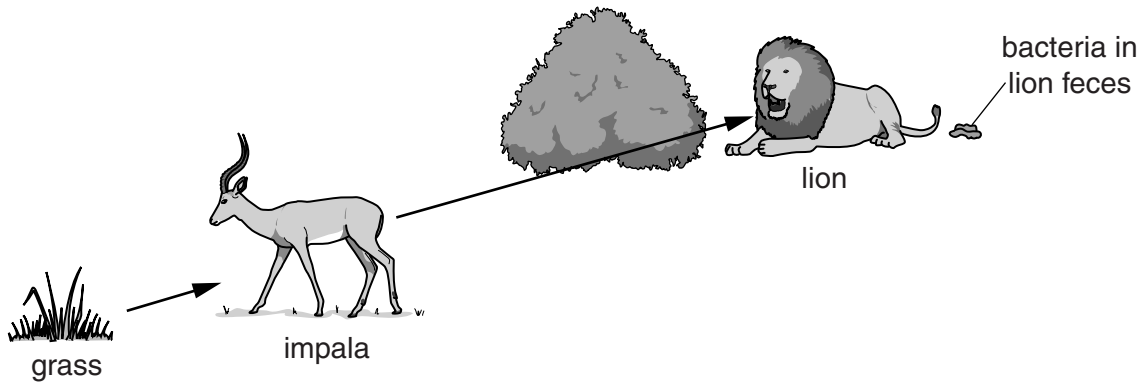


Fig. 15.1

(a) Use Fig. 15.1 to identify the

- (i) decomposer,
- (ii) producer,
- (iii) carnivore.

[3]

(b) Explain **two** ways in which energy is lost between second and third trophic levels.

- 1.
-
- 2.
-

[2]

16 Microwave ovens use microwave radiation with a frequency of 2.5×10^9 Hz.

(a) (i) Explain what is meant by the *frequency* of a wave.

.....[1]

(ii) The speed of microwave radiation is 3.0×10^8 m/s.

Calculate the wavelength of this microwave radiation.

wavelength = m [2]

(b) Infra-red radiation may also be used to heat food.

Compared to microwave radiation, state whether infra-red radiation has higher, lower or the same value of

(i) frequency, [1]

(ii) speed in a vacuum. [1]

17 The following is a list of metals.

aluminium calcium iron potassium zinc

From the list, select a metal to complete each sentence.

Each metal may be used once, more than once or not at all.

(a) The metal extracted from haematite is [1]

(b) An amphoteric oxide is formed by [1]

(c) The catalyst in the manufacture of ammonia is [1]

(d) Brass is a mixture of copper and [1]

(e) Sodium is less reactive than [1]

18 Tritium ${}^3_1\text{H}$ is an isotope of hydrogen.

(a) Explain what is meant by *isotopes of an element*.

.....
.....
.....[2]

(b) A tritium ${}^3_1\text{H}$ nucleus emits a beta-particle to form a nucleus of a helium isotope.

Calculate the number of protons and the number of neutrons in the nucleus of this helium isotope.

number of protons

number of neutrons

[1]

BLANK PAGE

Permission to reproduce items where third-party owned material protected by copyright is included has been sought and cleared where possible. Every reasonable effort has been made by the publisher (UCLES) to trace copyright holders, but if any items requiring clearance have unwittingly been included, the publisher will be pleased to make amends at the earliest possible opportunity.

Cambridge International Examinations is part of the Cambridge Assessment Group. Cambridge Assessment is the brand name of University of Cambridge Local Examinations Syndicate (UCLES), which is itself a department of the University of Cambridge.

DATA SHEET
The Periodic Table of the Elements

I		Group										VII		VIII		IX		X		XI		XII		XIII		XIV		XV		XVI		XVII		XVIII																																																																																																																																																																																																																																																																																																																																																																																																																																																																																																																																																																																																																																																																																																																																																																																																																																																																																																																																																																																																					
		II	III	IV	V	VI	VII	XIX	XX	XXI	XXII																									XXIII	XXIV	XXV	XXVI	XXVII	XXVIII	XXIX	XXX	XXXI	XXXII	XXXIII	XXXIV	XXXV	XXXVI	XXXVII	XXXVIII	XXXIX	XL	XLI	XLII	XLIII	XLIV	XLV	XLVI	XLVII	XLVIII	XLIX	L																																																																																																																																																																																																																																																																																																																																																																																																																																																																																																																																																																																																																																																																																																																																																																																																																																																																																																																																																																								
1	2	3	4	5	6	7	8	9	10	11	12	13	14	15	16	17	18	19	20	21	22	23	24	25	26	27	28	29	30	31	32	33	34	35	36	37	38	39	40	41	42	43	44	45	46	47	48	49	50	51	52	53	54	55	56	57	58	59	60	61	62	63	64	65	66	67	68	69	70	71	72	73	74	75	76	77	78	79	80	81	82	83	84	85	86	87	88	89	90	91	92	93	94	95	96	97	98	99	100	101	102	103	104	105	106	107	108	109	110	111	112	113	114	115	116	117	118	119	120	121	122	123	124	125	126	127	128	129	130	131	132	133	134	135	136	137	138	139	140	141	142	143	144	145	146	147	148	149	150	151	152	153	154	155	156	157	158	159	160	161	162	163	164	165	166	167	168	169	170	171	172	173	174	175	176	177	178	179	180	181	182	183	184	185	186	187	188	189	190	191	192	193	194	195	196	197	198	199	200	201	202	203	204	205	206	207	208	209	210	211	212	213	214	215	216	217	218	219	220	221	222	223	224	225	226	227	228	229	230	231	232	233	234	235	236	237	238	239	240	241	242	243	244	245	246	247	248	249	250	251	252	253	254	255	256	257	258	259	260	261	262	263	264	265	266	267	268	269	270	271	272	273	274	275	276	277	278	279	280	281	282	283	284	285	286	287	288	289	290	291	292	293	294	295	296	297	298	299	300	301	302	303	304	305	306	307	308	309	310	311	312	313	314	315	316	317	318	319	320	321	322	323	324	325	326	327	328	329	330	331	332	333	334	335	336	337	338	339	340	341	342	343	344	345	346	347	348	349	350	351	352	353	354	355	356	357	358	359	360	361	362	363	364	365	366	367	368	369	370	371	372	373	374	375	376	377	378	379	380	381	382	383	384	385	386	387	388	389	390	391	392	393	394	395	396	397	398	399	400	401	402	403	404	405	406	407	408	409	410	411	412	413	414	415	416	417	418	419	420	421	422	423	424	425	426	427	428	429	430	431	432	433	434	435	436	437	438	439	440	441	442	443	444	445	446	447	448	449	450	451	452	453	454	455	456	457	458	459	460	461	462	463	464	465	466	467	468	469	470	471	472	473	474	475	476	477	478	479	480	481	482	483	484	485	486	487	488	489	490	491	492	493	494	495	496	497	498	499	500	501	502	503	504	505	506	507	508	509	510	511	512	513	514	515	516	517	518	519	520	521	522	523	524	525	526	527	528	529	530	531	532	533	534	535	536	537	538	539	540	541	542	543	544	545	546	547	548	549	550	551	552	553	554	555	556	557	558	559	560	561	562	563	564	565	566	567	568	569	570	571	572	573	574	575	576	577	578	579	580	581	582	583	584	585	586	587	588	589	590	591	592	593	594	595	596	597	598	599	600	601	602	603	604	605	606	607	608	609	610	611	612	613	614	615	616	617	618	619	620	621	622	623	624	625	626	627	628	629	630	631	632	633	634	635	636	637	638	639	640	641	642	643	644	645	646	647	648	649	650	651	652	653	654	655	656	657	658	659	660	661	662	663	664	665	666	667	668	669	670	671	672	673	674	675	676	677	678	679	680	681	682	683	684	685	686	687	688	689	690	691	692	693	694	695	696	697	698	699	700	701	702	703	704	705	706	707	708	709	710	711	712	713	714	715	716	717	718	719	720	721	722	723	724	725	726	727	728	729	730	731	732	733	734	735	736	737	738	739	740	741	742	743	744	745	746	747	748	749	750	751	752	753	754	755	756	757	758	759	760	761	762	763	764	765	766	767	768	769	770	771	772	773	774	775	776	777	778	779	780	781	782	783	784	785	786	787	788	789	790	791	792	793	794	795	796	797	798	799	800	801	802	803	804	805	806	807	808	809	810	811	812	813	814	815	816	817	818	819	820	821	822	823	824	825	826	827	828	829	830	831	832	833	834	835	836	837	838	839	840	841	842	843	844	845	846	847	848	849	850	851	852	853	854	855	856	857	858	859	860	861	862	863	864	865	866	867	868	869	870	871	872	873	874	875	876	877	878	879	880	881	882	883	884	885	886	887	888	889	890	891	892	893	894	895	896	897	898	899	900	901	902	903	904	905	906	907	908	909	910	911	912	913	914	915	916	917	918	919	920	921	922	923	924	925	926	927	928	929	930	931	932	933	934	935	936	937	938	939	940	941	942	943	944	945	946	947	948	949	950	951	952	953	954	955	956	957	958	959	960	961	962	963	964	965	966	967	968	969	970	971	972	973	974	975	976	977	978	979	980	981	982	983	984	985	986	987	988	989	990	991	992	993	994	995	996	997	998	999	1000

* 58–71 Lanthanoid series
† 90–103 Actinoid series

Key

a	X
b	b

a = relative atomic mass
X = atomic symbol
b = atomic (proton) number

The volume of one mole of any gas is 24 dm³ at room temperature and pressure (r.t.p.).